



# 2011 Professional Services Study

February 2011

---

# Table of Contents

## I. Study Profile

- I. Participant Breakdown by Geographic Location

## II. Clinicals

### I. Current Market

- I. Recent (2008-2010) Professional Services Investment
- II. Vendors for Recent (2008-2010) Professional Services Investment
- III. Timeframe of Recent Professional Services Investment

### II. Vendor Mind Share

### III. Market Opportunity

## III. Revenue Cycle Management (RCM)

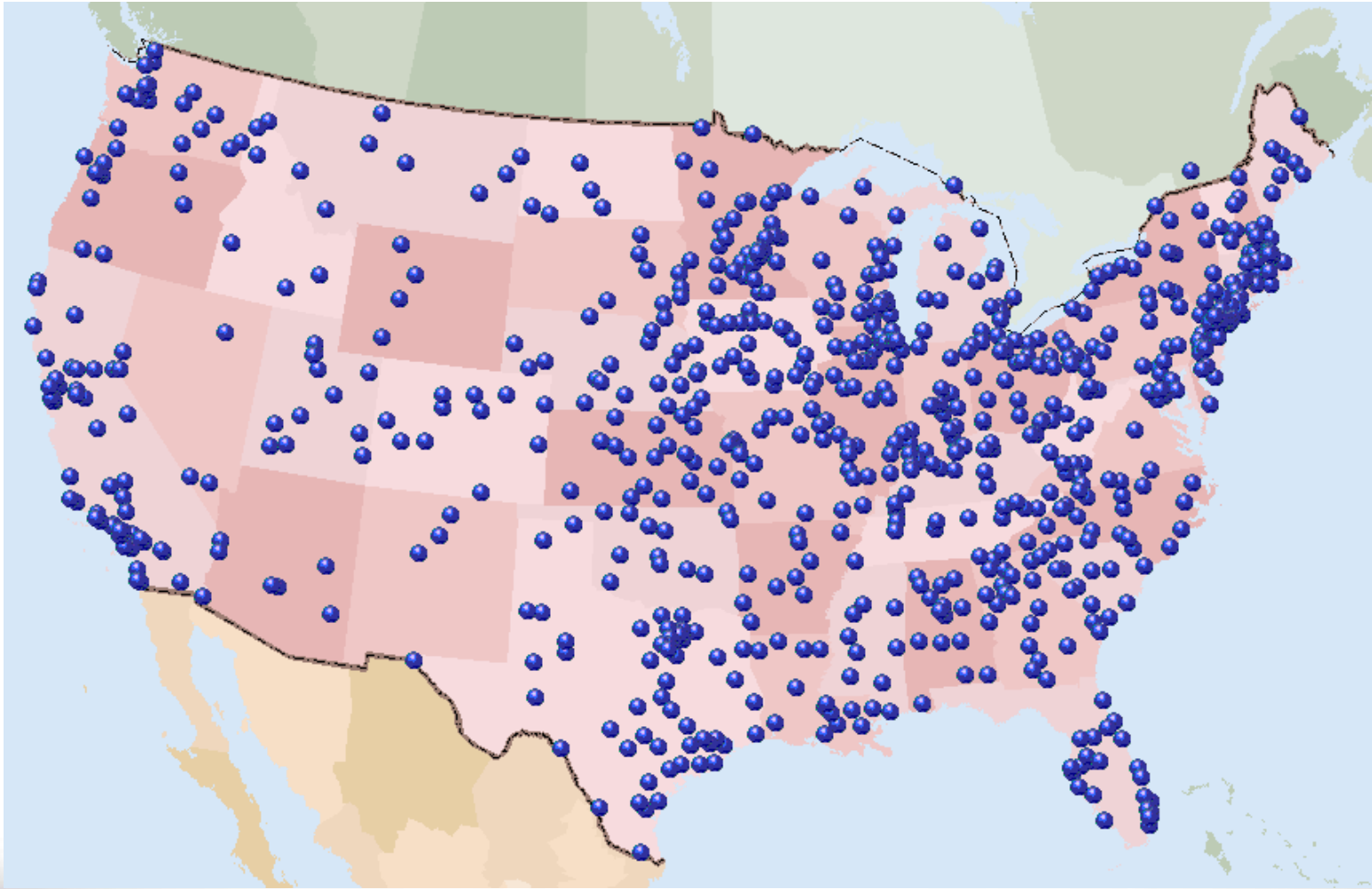
### I. Current Market

- I. Recent (2008-2010) Professional Services Investment
- II. Vendors for Recent (2008-2010) Professional Services Investment
- III. Timeframe of Recent Professional Services Investment

### II. Vendor Mind Share

### III. Market Opportunity

# Study Participant Profile: by Geographic Location ( $n = 450$ )



# About Us

CapSite™ is a healthcare technology research and advisory firm

Our mission is to help our healthcare vendor and provider clients make more informed strategic decisions that enable them to accelerate the growth of their business.

**The CapSite database is the trusted, easy-to-use online database, providing critical knowledge and evidence-based information on healthcare technology purchases.**

CapSite provides detailed transparency on healthcare technology pricing, packaging and positioning.

*When it comes to healthcare technology research, it helps to see all the details. **Those details are now available with CapSite.***

## Research Advisory Solutions

# CapSite

Voice of  
Customer  
(VOC)

CapSite  
Database

Strategic  
Industry  
Reports

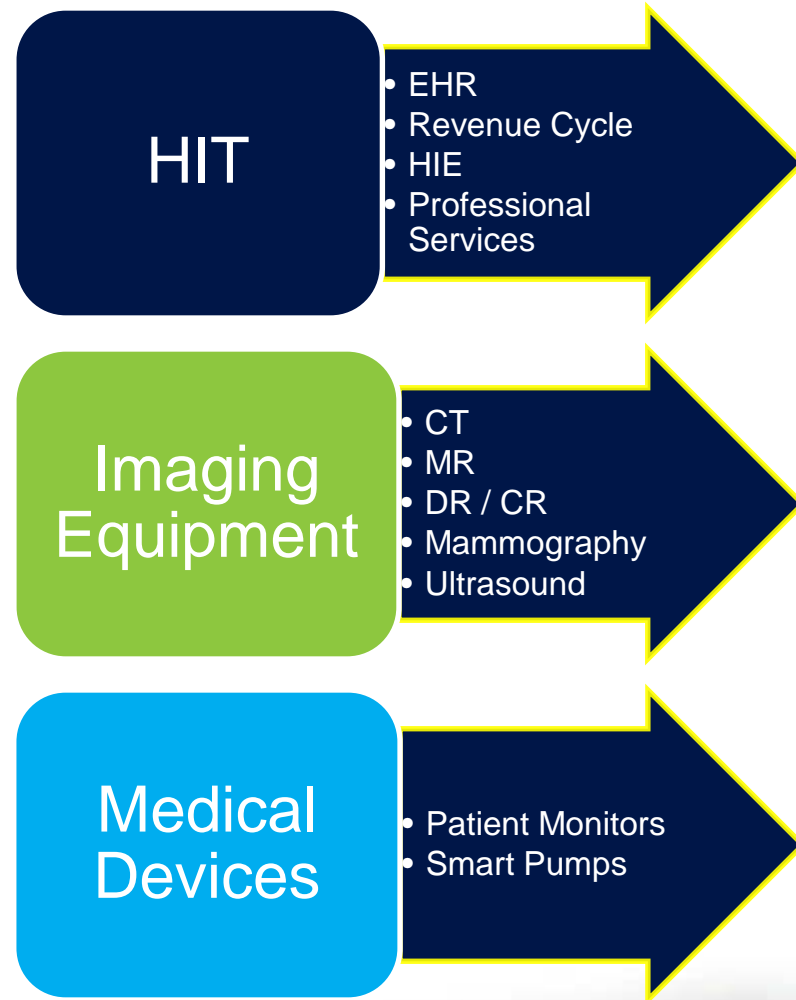
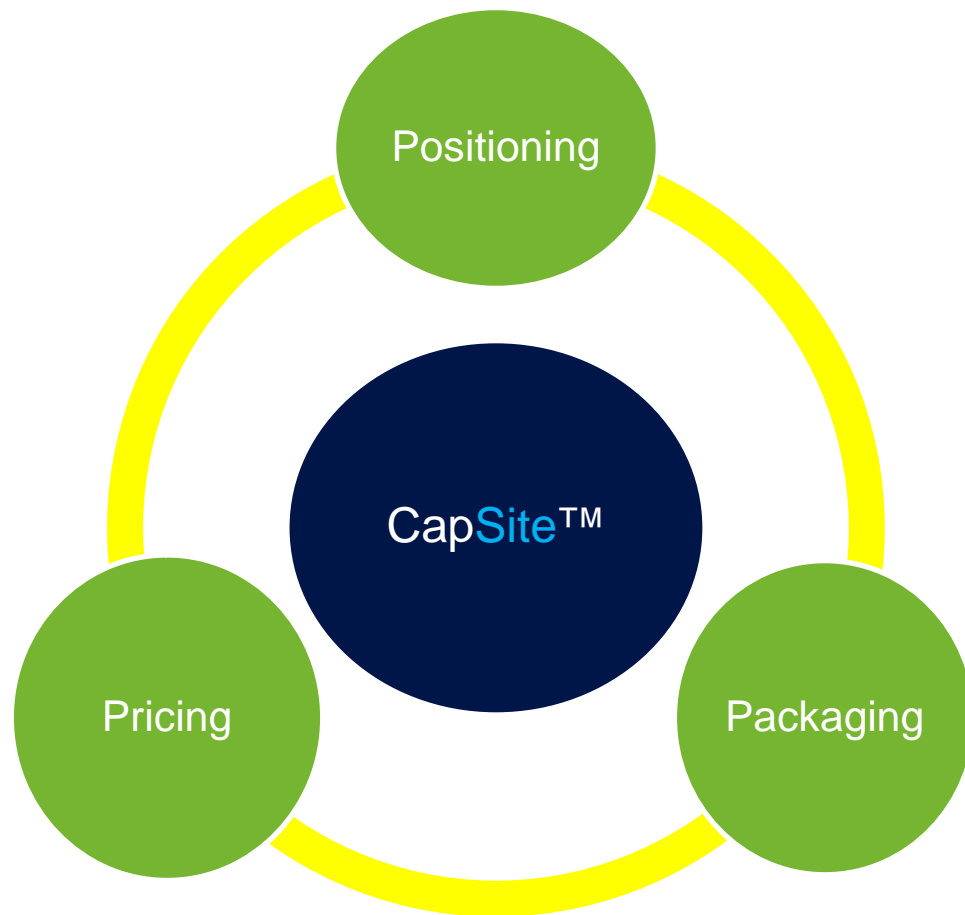
Diagnostic  
Benchmarking  
Win / Loss

Align your  
messaging with  
your customers  
perception of value

Optimize your  
pricing to  
maximize your  
revenue and profit

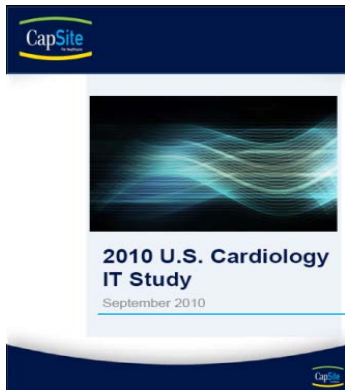
Competitive  
Landscape  
Market Size  
Market Opportunity

Proven framework  
to improve your  
win rate

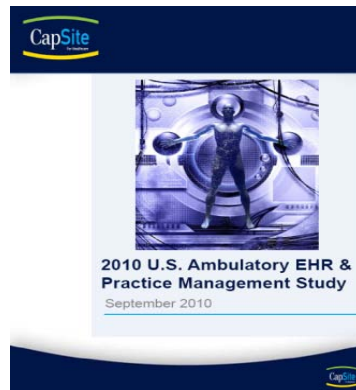


# Strategic Industry Reports

## Cardiology IT



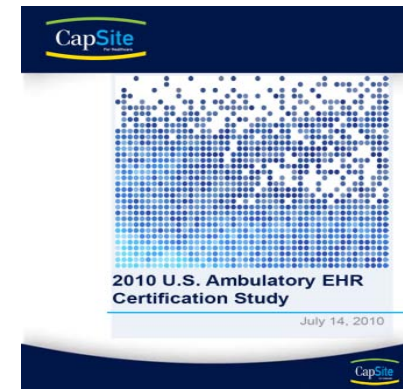
## Ambulatory EHR & PM



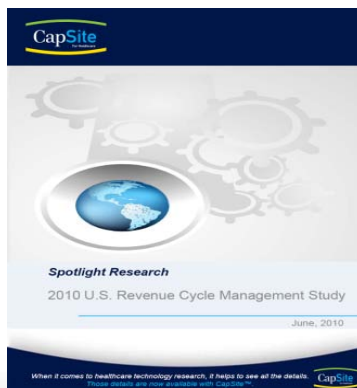
## Remote Radiology



## EHR Certification



## Claims Management



## PACS / Imaging IT



## Ambulatory EHR





CapSite  
For Healthcare

**CapSite**

[www.capsite.com](http://www.capsite.com)

**802.383.0675**

[reports@capsite.com](mailto:reports@capsite.com)